



Jubilee by Gregory Black (Detail)

YEAR IN REVIEW

City of Loveland Cultural Services Department

2022



OUR MISSION

Enriching lives and connecting
our community through diverse
arts and history experiences.

CULTURAL SERVICES



LOVELAND ARTS AND CULTURE



Susan Ison

Director of Cultural Services

I hope this is the last time I'm compelled to write about COVID, but it affected our department in unexpected ways in 2022 in sort of a "silver lining" way.

It's well known that most museums and theaters shut down for COVID for long periods of time. The Rialto was closed and reopened twice, the Museum once. The now familiar "accommodations" were made in both places to allow public access again. Everyone on staff worked diligently and creatively to make visits safe and comfortable. It was unpredictable and stressful.

Then came the unexpected: funding to assist in the recovery of financially struggling cultural institutions became available—through the Shuttered Venues Operators Grants (SVOG) and the Colorado Creative Industries Arts Relief Fund (CARF).

Thanks to our nimble and talented staff—Steve Lemmon and Jennifer Cousino—we successfully were awarded two grants: \$259,000 for the Rialto and \$100,000 for the Museum. Both grants were intended to support immediate needs with an emphasis on providing jobs; both had fairly short deadlines for spending. Considering there is always a wish list on hand to provide improved or additional services to the community, staff mobilized quickly to determine priorities. These are some of the projects completed:

- Hired a translator to provide much of our printed material, signage and educational curriculum into Spanish.
- Purchased new technical equipment for the Rialto to further upgrade our capabilities.
- Designed and built a new concession area in the Rialto lobby and new Rialto Bar in the annex.
- Secured additional performances at the Rialto.
- Hired a printmaker to develop a new, fully functional print shop at The Beet.
- Expanded our Event Coordinator position to full-time.
- Hired a local artist to create a projection mapping project for downtown holiday celebrations.

We also finally celebrated the Rialto's 100th anniversary at 102 years!

Every staff member in Cultural Services has written about their experiences in 2022. You will see that many of them are grateful for and proud of the same things. All years are unique, but this one had an unexpected funding element that led to new opportunities.

We are always grateful to the Loveland community for your support. We love seeing you come through our doors. Best wishes in 2023.

Susan

Susan P. Ison
Director Of Cultural Services



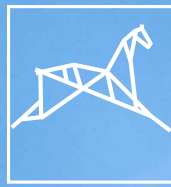
Colorado Governor Jared Polis, Ruth Scott, and Susan Ison at the Governor's Art Show & Sale



Susan Ison and Printmaker Johanna Muller at the Print Shop at The Beet



Susan Ison and City Councilor John Fogle on Rialto stage during 100th Anniversary Celebration



ART IN PUBLIC PLACES

LOVELAND ARTS AND CULTURE

LovelandPublicArt.org

Open Window by Ted Schaal

In 1985, Loveland made a profound commitment to the arts by becoming the first Colorado city to pass an Art in Public Places Ordinance, which designates one percent of the City's capital projects (valued at \$50,000 or more) for the purchase and ongoing maintenance of art. Through vision, hard work, and collaboration, Loveland has amassed a large, diverse public art collection that creates a sense of place and purpose.



Suzanne Janssen

Public Art Manager

2022 In Review

There is no denying that the pandemic continued to affect Art in Public Places (AIPP) events and processes throughout 2022. Learning from the past, we had a better understanding of how an unpredictable virus can affect normal operations and we were able to pivot smoothly as plans were tweaked.

AIPP partners with multiple City departments, local arts organizations, and highly skilled professionals as each public art project presents new and interesting challenges. A successful public art program really does take a village. Through donations, artist commissions, grants and direct purchases of art, the City's public art collection grew to 563 by the year's end. Throughout the year, we continued to grow in momentum and we see a bustling 2023 in its wake.

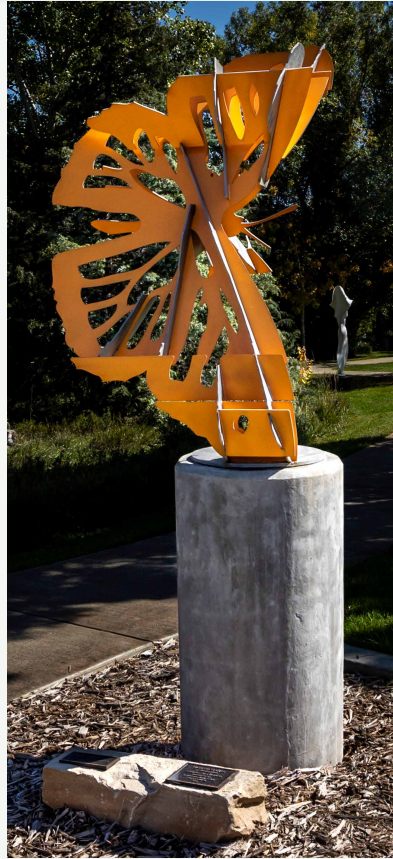
Below are some of the highlights of 2022 and a sneak peek at 2023 projects that are in the planning stages.

In January, six sculptures were generously donated by the Loveland High Plains Arts Council (LHPAC) to the City of Loveland. In May, Art in Public Places and the LHPAC hosted a celebration of Polly and Mac Juneaus' three decades of volunteer efforts as Board Members and organizers of Sculpture in the Park. Over 120 community members, friends and family joined in honoring their vision and commitment to Loveland's art culture.

Eight new artworks were selected by Art in Public Places for the 2022 TAAP 2D exhibit displayed in the Library's Galleria. These artworks were selected from 79 applications submitted for this one-year art on loan program, which features artists from several Front Range communities.

In June 2022, AIPP hosted its largest display of on-loan sculptures with nine sculptures in downtown Loveland. Installed along 4th Street between Washington and Garfield Avenues. These sculptures will be displayed until spring 2024.

Maintenance continues to be one of the largest budgetary line items as the number of artworks acquired increases throughout the years. Pacific Coast Conservation and Sculpture Services of Colorado provide excellent conservation measures on an ongoing basis.



Monarch Girl by Joe Norman



Power of Thought
by Victor Issa



Standing-Strong by Douglas Wodark

Art in Public Places

Art in Public Places collaborated with the Public Works and Cultural Services staff to create two large-scale murals for City facilities. Selected from a highly competitive field of national artists, two artist teams were hired to create *Message in a Bottle* by Art of Anón (Samantha and Jhonattan Arango) at the Loveland Recycling Center, and *Madre Natura* by Don Rimx on the exterior of the Beet Education Center. Both teams held community mural workshops.

The following capital projects are currently underway for 2023: *Nebula* by Sandra Nelsen, Madison Avenue Corridor (two phases), Old Course of Loveland Clubhouse, Willow Bend Adaptive Playground, Public Library Children's Mural, Pulliam Building, *Equinox* by Team Equinox, and The District Parking Garage.

563

Total Number of Pieces In the Public Art Collection

13

New Pieces of Artwork Acquired in 2022

302

Pieces of Artwork Receiving Maintenance in 2022

278

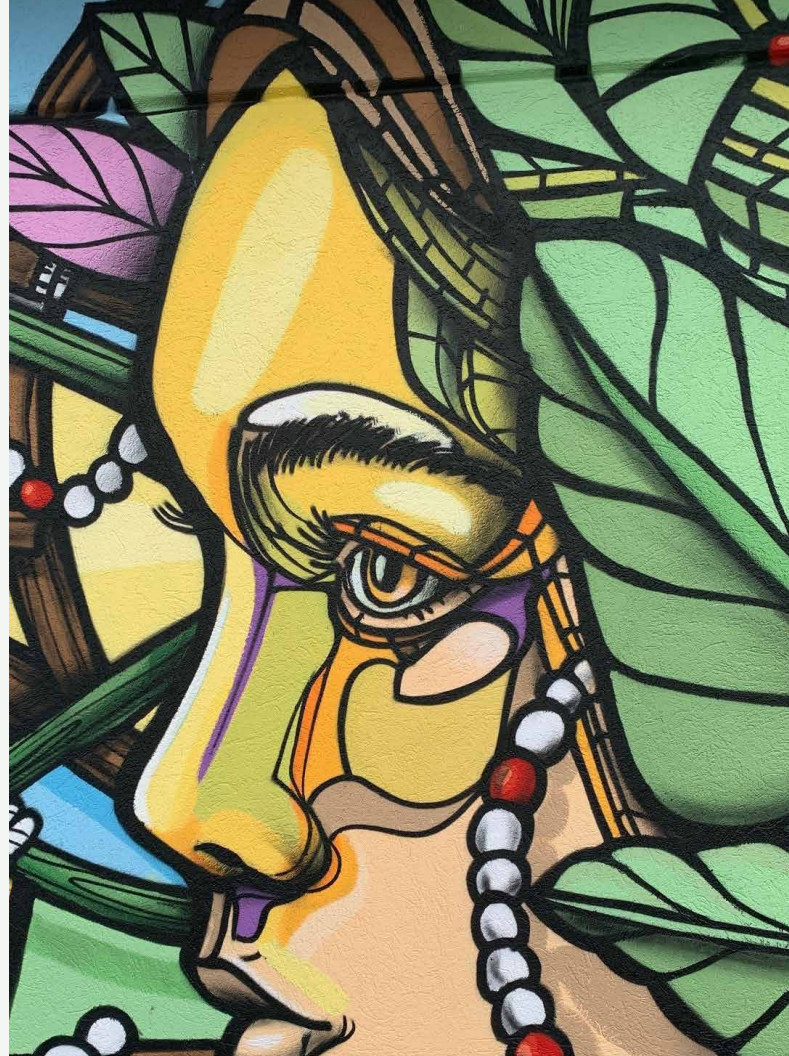
Artists Juried for Art in Public Places Projects

\$12.3

Estimated Value of the Collection

1,950

Number of Contacts through Otocast App



Madre Natura by Don Rimx (Detail)



All of Your Dreams by Cynthia Ligeros



Message in a Bottle by Art of Anón

This mural serves as a reminder of the connection between the natural world and human activities. An estimated 250 people assisted with creating the mural during the Community Paint event.



Message in a Bottle by Art of Anón



LOVELAND MUSEUM

LOVELAND ARTS AND CULTURE

TheLovelandMuseum.org



John Mellencamp Exhibit, Loveland Museum

The Loveland Museum is an accredited art and history museum that was founded in 1937 by local author, collector, curator, and mountain guide Harold Dunning. Today, the Museum is home to a variety of history exhibits; hosts world-class art exhibitions; and provides family events, adult and youth classes, lectures, poetry readings, and other programming opportunities for the Loveland community and visitors from around the world.



Jenni Dobson

Curator of Education, Loveland Museum

2022 was a busy year for Museum education, as we continued to rebound with classes, tours, programs and outreach.

Our 2nd Grade History Days field trips returned in the spring, with over 1,200 students, teachers, and chaperones visiting the Museum, Rialto, and Lone Tree School. Students learned about the beginnings of the Northern Colorado region while participating in hands-on activities and lessons. Our volunteer group for this event is outstanding, and we could not make this amazing field trip opportunity work without them.

Programming at our education annex, **The Beet Education Center**, continues to run strong, offering arts opportunities for all ages and abilities. My wonderful colleague and our History Curator, Jennifer Cousino, secured us an amazing grant last year with Colorado Creative Industries (CCI). This grant allowed us to finish a project that has been on our radar for two decades—a print shop! Centered with a floor-model, hand-operated Takach printing press, the **Print Shop at The Beet** was finally born. With the help of contractor and Colorado printmaker Johanna Mueller, the space is supplied and ready for classes. There are so many ways to make a print—I am still learning them all. And I am excited to have this beautiful, bright space to offer a diverse lineup of workshops for people to learn more about the printmaking process.

The CCI grant also allowed us to hire a Spanish translation contractor over the summer. Rebecca Snowden worked on our exhibit interpretation documents, giving us a large collection of files that are now available in Spanish. We have already started to integrate these into our offerings, with handouts, facility signage, scavenger hunts, our first AHA! brochure in Spanish, and exhibit information. We plan to continue to utilize the files to one day offer an entire tour of our history exhibits in Spanish.

One of the most dynamic programs we held this year was centered around Día de los Muertos, or Day of the Dead. We partnered with The Loveland Public Library and Heart and Sol as well as Barbara Mendez and her students from the CSU and UNC Lambda Theta Nu Sorority Inc. In two workshops, we watched students from all ages and all walks of life create beautiful sugar skulls, luminaria, paper flowers, and other altar pieces to be placed in our community Nicho (Altar). The week culminated with food, dancing, and celebration in a Día de los Muertos event at the Museum that was vibrant and fun.

We look forward to what Museum Education can bring to the Loveland community in 2023!



Education Programming - Loveland Museum

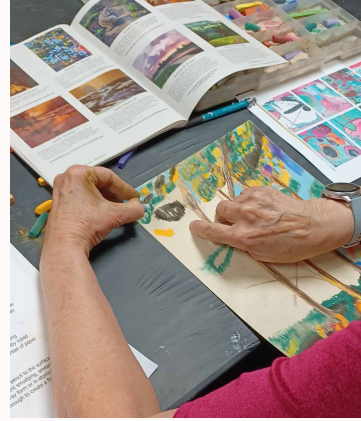


ART CLASSES TAUGHT AT THE BEET

January – December 2022

120 Classes for Tot through Adults

Total Participants **649**



LONE TREE SUMMER SCHOOL

June - August 2022

3 Mini Camps

Total Participants **54**



ARTIST WORKSHOPS AND COLLABORATIVE PROGRAMS

January – December 2022

16 Workshops & Programs

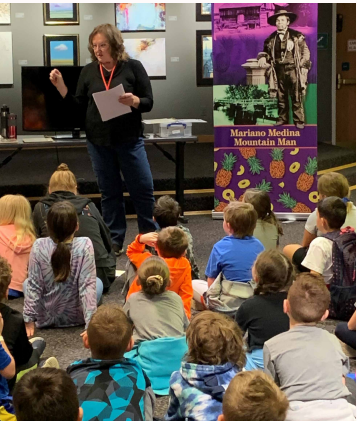
Total Participants **227**

PROGRAMS AT THE MUSEUM

January – December 2022

5 Tours, Virtual & In-Person Artist Talks

Total Participants **139**



TOURS & CLASSROOM OUTREACH

January – December 2022

21 Tours, School Visits History Days

Total Participants **2,041**



EVENTS

January – December 2022

4 Cherry Pie, Pastels on 5th Day of the Dead Secret Santa Workshop

Estimated Attendance **4,000+**

OUTREACH EVENT BOOTHS

January – December 2022

7 Different Community Events: Children's Day, Kidchella, Centerra Kids Day, etc.

Total Booth Visitors **5,000+**



Jennifer Cousino

Curator of History, Loveland Museum

In 2022, there were many exciting and relevant history exhibits and programs celebrating Loveland's unique community and their varied interests.

In the Dunning Gallery:

Gateway to the Rockies: A Visual Trip Down Highway 34



Gateway to the Rockies Exhibit

Nestled in the foothills of the mountains, Loveland has always been called the Gateway to the Rockies. The Museum's collection of property record cards traced the development of support businesses along this heavily traveled corridor.

Audubon's Quadrupeds: His Last Project

John James Audubon (1785 – 1851), the masterful painter of North American birds, turned his attention in the last twelve years of his life toward the depiction of four-footed mammals in their natural habitat.

Climbing Mountains: The Life and Work of James Disney

James Disney was a friend of Harold Dunning, the Museum's founder. They shared a love for the outdoors and the history of the region. Jim contributed to the Museum's permanent history exhibits utilizing his artistic skills to create wonderful murals depicting early Loveland scenes. These murals as well as his portrait of Harold Dunning are still on display. This exhibit explored James Disney's life as an artist, an environmentalist, and a community member.



James Disney Easel Display

In the Mezzanine Gallery:

Running Water

Laura Cofrin used the wet plate collodion method to create her photographs. She combined this historic method with digital photographs captured in the field to create her own wet plate collodion tintypes.

Ditches

Colorado's extensive ditch system has helped agriculture in the region thrive for hundreds of years. The history of the ditches in Loveland, water rights associated with them, and the ditch companies that are responsible for the distributing water were explored in this exhibit.

Beneath the Bird Feeder

With photography by Carla Rhodes, this exhibit provided an opportunity to gain insight into the hidden lives of animals at night and an appreciation for their mysterious beauty through hauntingly poetic photographs.

Nurture: Bird Houses and Feeders as Sculpture

To explore the theme of awareness and the natural world, regional artists put their unique creative spin on bird feeders and domiciles. This invitational sculpture exhibit showed that art is for everyone, even our feathered friends.



Contained Exhibit



Windsor Rec Case

Other Exhibits:

A brick arch was created for the Fire Storefront on Main Street. It mirrors the original Loveland hose cart house in its design. Continuing with the fire theme, Loveland Fire Exhibit, Inc. opened their new display at The Beet Education Center. It features historic fire artifacts from the Museum's collection. History was also on display during the Innovation Festival



at the Forge showcasing antique Hewlett-Packard equipment from the Museum's collection. The Museum also collaborated with the Windsor Museum and the Rocky Mountain YMCA to create exhibits for the display cases at the Windsor Recreation Center Exhibit. An exhibit about winter activities and warmth was on display October 7 through December 31 and featured photographs of the Leadville Ice Palace and historic objects designed to provide warmth.

Thanks to a Colorado Creative Industries grant, the Museum was able to partner with the Loveland Downtown Partnership to activate the historic desk chair building at the corner of Fourth and Cleveland with a digital projection created by regional artist Kendra Fleischman. This incredible artwork celebrated the winter holidays.

Dancers from Día de los Muertos



Dancers from Día de los Muertos



Meaningful Community Programing:

The Museum worked with the Loveland Poet Laureate Program Committee to develop poems reflecting the art of local artist James Disney. The poems both celebrated his life as an artist and brought to life his work. In addition, poets came together to read James' favorite poems in the Dunning Gallery enriching the exhibit space with spoken words.

The Museum worked with Heart and Sol and the Martin Luther King, Jr. Events Committee to provide programs showing the rich diversity of Northern Colorado's community. The Asian-American Pacific Islander month event provided the opportunity to watch dance, taste food, and hear first-person stories of growing up as an Asian-American Pacific Islander. The Museum hosted a Día de los Muertos event with music and dancing, face painting, food, and craft activities celebrating the holiday. The Black History Month Program featuring the Wa Shonaji quilt show was a colorful presentation of black history milestones. MLK, Jr.'s Legacy and the history of Voting Rights with the League of Woman Voters were also explored during additional presentations.

Windsor Rec Case





Maureen Corey

Curator of Art, Loveland Museum

The main goals of the art exhibition program are to put a spotlight on the rich offerings afforded by Loveland's artistic community and to bring a variety of art forms from nationally and internationally known artists to Loveland. The exhibitions presented in 2022 were notable for their variety in style and medium, pushing forward the discussion of what is defined as fine art and the many different access points available to museum visitors as they experience these unique interpretations.

Highlights from 2022 include a rare foray into Minimalist art with an exhibition by Jennie Kiessling titled *In the Garden, In the Distance*, which ambitiously linked the beauty of minimalist art with a narrative component, challenging our visitors to see objective beauty through a subjective lens. Other highlights included a revival of the *History as Art* project, which challenged local artists Becky Hawley and Dion Weichers to creatively interpret that quintessential tool, the cherry pitter, resulting in surprisingly dark and introspective paintings and installation. History and art came together again in *Beneath the Feeder*, which paired photographs by Carla and sculptural bird houses made by Loveland artists. Other solo artist exhibitions explored a variety of media such as pyrography by Julie Bender, abstract paintings by Dena Peterson, and the art of silverpoint by Tom Mazzullo. Main Gallery exhibits included concurrent exhibits by Colorado photographer Ronda Stone and painter/sculptor Tammi Brazee. Brazee's CCI grant funded project linked her hallmark use of the "sneaky marmot" with mental health and the value of art as a psychological tool.

Fall and winter exhibits honored the excellence of artistry in Northern Colorado and the surprising reach of the Loveland Museum to bring never before seen artists to the region. James Disney had a vision to exhibit his paintings next to the work of his friend and photographer Erik Stensland. Though Disney passed away in late 2021, the Museum and the family continued his work and expanded the exhibit to include a retrospective of Disney's life's work as an artist. The result was a testament to the many people Disney reached with his art and Disney's embrace of his freedom to always grow as an artist.



John Mellencamp Exhibit



Colorado Governor Jared Polis with Museum Guests
Governor's Art Show & Sale

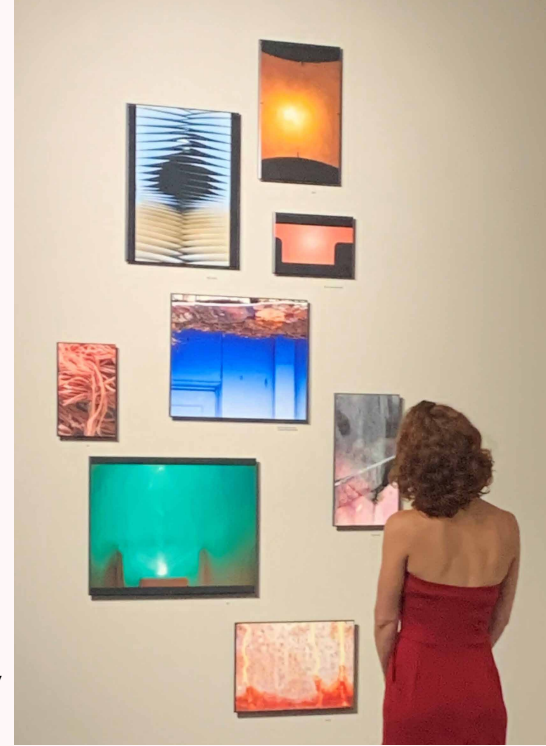


Erik Stensland Artist Talk in *Double Vision* Exhibit

In November, John Mellencamp, mostly known as a musician but also a lifelong painter, brought his artwork to Loveland. With a strong emphasis on portraiture clearly contextualized in the history of art, Mellencamp showed himself to be an academic artist with a clarity of purpose to explore the essence of individualism and the nature of human motivation.

A new project was launched as a partnership with Loveland Meals on Wheels that connects people to art in different ways. Art Kits, which included an art activity and other information, links to tours, and catalogues, were handed out by Meals on Wheels to their clients. Intended to give people access to Loveland Museum's programs and exhibits even if they can't come in person, 300 art kits were assembled by Museum volunteers and distributed. The project will continue quarterly throughout the coming year.

The art exhibitions and programs throughout the Museum are connected by a clear pattern of influence that illuminates Loveland's position as an active instigator within the world of contemporary art. In addition to the six Main Gallery exhibitions, Loveland Museum presented 10 additional exhibitions in four gallery spaces, including the 12 Ft. of Wall exhibit space, a small exhibit space that offers regional artists an additional venue option. From the unexpected inspiration of cherry pitters, to the reminiscence of rock and roll photos of the 1960s, to the innovation explored within the *Artists Visage Artists* exhibit, and group exhibitions such as the Loveland Art Studio Tour preview, visitors were continually faced with new directions in creativity that emphasized art's vast potential and value within a changing world.



Guest viewing Ronda Stone Exhibit



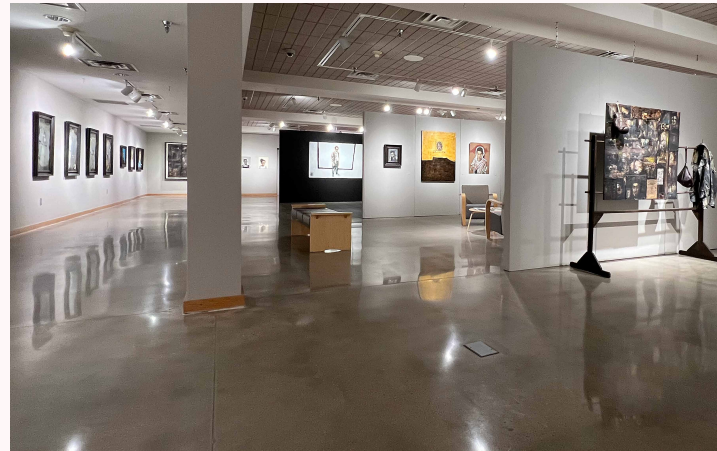
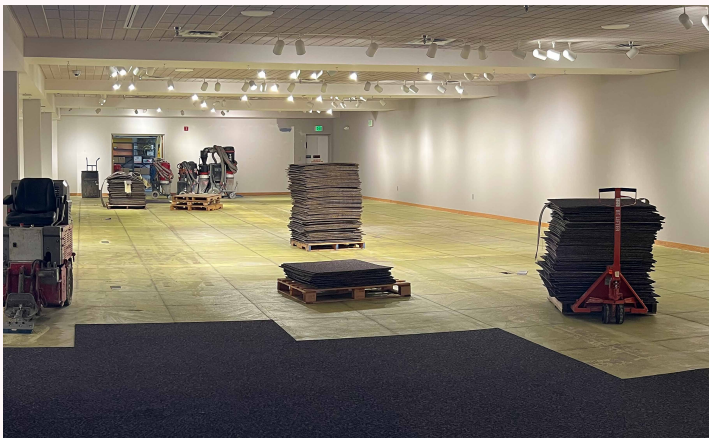
Eric Franklin

Exhibits Preparator, Loveland Museum

In addition to 19 exhibitions in our six different temporary galleries at the museum, we were able to do some significant remodeling in 2022. We're always striving to present artwork and historical objects in the best possible ways and these remodels, especially in the Main Gallery, have helped us do just that.

Today most contemporary art galleries will have a hard surface floor so in the Main Gallery we removed the carpet to reveal the concrete floor beneath. But of course, it wasn't enough to just remove the carpet. We had a crew come in to first scrape off the old carpet glue and then grind and polish the concrete into what is know as a salt and pepper finish. Polished concrete is such a great surface for an art gallery floor as it looks really beautiful with all its subtle imperfections, but also allows us to use it pretty heavily without worrying about

Floor Refinishing



Refinished floor, John Mellencamp Exhibit

damaging it. Large wooden crates, forklifts, and hydraulic lifts won't hurt this floor at all so it's ready to look good for decades of exhibitions with minimal maintenance. At the same time, we also removed the small partition wall from the back of the gallery to make more room for artworks to be displayed.

Also, in one of our smaller galleries, the Green Room, we removed the carpet for the same reasons as in the Main Gallery. Unlike the Main Gallery, polishing the concrete wasn't really appropriate for this space so instead we went with a light, honey colored ash wood floor. This really transformed and added a nice warm feeling to the space.

Museum Visitors

28,614

- General Admission = **7,191**
- Main Gallery Admission = **8,389**
- Programs, Museum and Community Events, Lectures, and Classes = **12,027**
- Meetings and Rentals = **1,007**

Main Gallery Revenue

\$25,635.80

Donations

\$113,336.49

- General Donations = **\$8,336.49**
- Grants = **\$105,000.00**

109

VOLUNTEERS

3,431

HOURS

1,278

Members

\$26,285

Membership Revenue

\$102,764.44

VALUE

Where Were Our Visitors From?





Kristi Woolsey

Executive Assistant, Loveland Museum

My first full year with the Cultural Services Department was transformative and gratifying. Although I have lived in Loveland for over fourteen years, I learned so much about the arts, theater, and history of this amazing city. To be able to share this knowledge with Loveland Museum visitors was even more enjoyable. The Museum's hours were fully reinstated after the challenging prior years of COVID, and we were back! Overseeing the Museum's front desk was incredibly rewarding. Staff and volunteers worked as receptionists, docents, cashiers, community liaisons, problem solvers, and customer service virtuosos. Older adults, students, historians, art enthusiasts, tourists, and long-time residents filled our days at the front desk. The Museum's Business Services Technician, Business Services Specialist, Clerk/Cashier, along with amazing volunteers, assisted and connected with the diversity of visitors on a daily basis. In addition, this year brought new staff to the front desk, each bringing a sense of purpose and engagement. Our gift shop went through a renewal with an expanded footprint and delightful, new products. Quick access to a shop full of captivating jewelry, toys, and books, along with the annual Loveland Valentine and Winter Holiday Council ornament is a perk of my job (even better is the 10% discount I receive with my museum membership).



Red Schoolhouse on 5th, Museum Visit

I experienced behind the scenes work with the highly acclaimed Governor's Art Show, the delectable Cherry Pie Celebration, and numerous Nights on the Town. Loveland Historical Society programming provided a fun and engaging evening work shift on the second Thursday of each month. So many interesting topics! The speakers were entertaining, and the members were knowledgeable and astute. I also helped coordinate event space for Poet Laureate Committee programs. Community members sharing poems, diverse speakers, and seasonal themes brought the Foote Gallery alive with verse and composition. How fortunate I am to work and live in such an artistic and insightful community. 2022 was a year full of accomplishments, creative events, and providing service to our community.





Tegan Hollen

Business Services Technician, Loveland Museum

2022 was the year of new roles and responsibilities for me. We kicked off the year by adding another member to our front desk team, which prompted a review and update of my position and allowed me to plan new projects and work on some that were languishing on the back burner. Then, I traded the museum life for the mom life when my son arrived in February. Another new team member! I returned to work in April, primarily focused on catching up and continuing training for our new staff.

Eventually, I set my sights on a variety of membership, volunteer, and technology-related tasks. I was excited to expand our access partnerships with regional libraries, with the addition of the Poudre River Public Library Curiosity Pass and Glenn A. Jones, M.D. Memorial Library Family Pass, as well as renew our participation in the Sweetheart Pass program at the Loveland Library.

I was also encouraged by the enthusiasm of our visitors eager to engage after the most challenging years of the pandemic, reflected in many ways from the number of our Museum members – which is close to matching our pre-2020 levels again.



Jessica Johnson

Business Services Specialist, Loveland Museum

I started at the front desk with a focus on the gift shop in August and have spent the last several months getting to know the Museum team and patrons. We had a great final quarter and, with the help of our excellent volunteers, worked hard to expand the gift shop and merchandise.

We focused on products that would complement our exhibits, enhance patron experience, and highlight local and regional artists. We added some new local artists to our regular contributors and are sourcing merchandise from small, independent creators around the US.

In 2023 we are looking forward to a re-brand as the Loveland Museum Store and seek to become a reliable place in the community to find interesting and unusual items that patrons can feel good about purchasing.





Ashley Yager

Collections Manager, Loveland Museum

The Archival Collection took center stage this last year in collections work. It was a big year for our archival holdings.

In 2021, we received a grant from the Colorado Historical Records Advisory Board to start digitizing our photograph collection of over 2,500 images. We hired Katalyn Lutkin, who proceeded to scan and update records until the end of June last year. At the end of the project, Katalyn finished digitizing and describing over 1,600 photographs. This project was a great leap forward in making our collections more accessible to the public. All the images that were scanned as part of the grant are now viewable on our website. The public can browse through the collection and request digital copies for their own use. Thanks to a generous donation last year, we are looking forward to continuing this work in digitizing our photograph collection and will be updating the website throughout the year with new images!

Another big project that was completed last year was moving the entire Archival Collection to our off-site building. This move reunited the Archival Collection with our Object Collection that was moved off-site in 2017. This project was a great opportunity for us to organize our collection, complete updated inventories, and get a stronger sense of what remains in our collection that still needs cataloging.

New incoming donations last year also seemed to follow the theme of strengthening our Archival Collection. The Museum received many great donations, with a variety of material that represents the lives of past Loveland residents. One donation of note was a collection of letters, photographs, and other material from Albina Washburn's life. Albina and her husband John set up the first post office in Loveland. Albina also started the first school in town and was a suffragist who helped found the Colorado chapter of the Women's Christian Temperance Union. Albina Washburn's collection is currently being digitized and will be put on our website this coming year.

Now that we have our database online, I hope to add more from our Object Collections online as well this coming year. We have a great hat and quilt collection that will be added soon. Stay tuned!

As always, I couldn't be more thankful for the volunteers that work with me in the collections. 25 volunteers, interns, and work study students dedicated over 2,000 hours in the collection working on database entry, object photography, cataloging new items, inventorying collections, and everything in-between. Ensuring the preservation of Loveland's past takes a lot of time and work. I am so thankful to every one of my volunteers for helping achieve this goal.

Carnegie Library Model



Dude Corral Napkin Holder



Albina Washburn Collection



Summer Storm by James Disney



Firemen Competition



El Corazón Inocente (The Innocent Heart),
2010 by Ana Maria Hernando

Additions to the Collection

- **2021 Loveland Holiday Ornament**, Museum Purchase from Winter Holiday Council
- **2022 Loveland Valentine**, Museum Purchase
- **2022 Loveland Valentine cachet stamp**, Museum Purchase
- **Dude Corral napkin holder**, Bill Meriath
- **Rialto History Collection**, City Transfer - Rialto
- **Four photos of Loveland Residents:** Mildred Webster Coughlin, Geneva Hershman, Geneva w/ husband Francis, Marie Webster-Beery, Robert Drage
- **Picture of the Independent Order of Oddfellows, Lodge #36**, Fort Lupton Museum
- **Feed & Grain photographs**, Erin McLaughlin
- **Romanian Book: Limga Engleza**, (section on the Loveland Valentine Remailing program) Nils Kauffman
- **Model of Carnegie Library**, George Franke
- **Set of slides taken in 1967 of the firemen competition in Loveland**, Richard Irwin
- **Three postcards of Loveland: Two of Kings Court, One of train at Lake Loveland**, Sue Squier
- **Big Thompson Flood of '76 scrapbook**, Nancy Mink
- **Three Boxes of Longmont Times-Call clipping files on Loveland**, Longmont Museum
- **Two Cherry tins: Montmorency, Cherry Products**, Trudi Manuel
- **Aerial photos of Loveland**, Eldon Newt
- **Photos: Mr. & Mrs. W.C. Vorreiter**, Richard Ball
- **Library Time Capsule**, Hilary Dehn
- **Washburn history**, Ron Sladek
- **Scans of city directories, Microfilm copies of Reporter-Herald Sept 13, 2018- Aug 31, 2021**, City Transfer - Loveland Public Library
- **Two alabaster vases**, Beth Appleton
- **Report card and other correspondence found inside wall of Loveland home**, Robert Gross
- **Cream of Wheat ad, handmade Christmas card by Hoff sisters**, Patricia Richmond
- **James Disney painting**, Anonymous
- **City Dairy milk bottle**, Hastings Museum
- **Organizational history of the Loveland chapter of the Good Sams Club**, Carol Roberts
- **Civil War relics excavated from battlefields and campsites**, Franklin Jefferson
- **92 digital images of the Cloverleaf Kennel Club, 20 digital images of buildings where the Foundry is now**, Ken Jessen
- **El Corazón Inocente (The Innocent Heart), 2010 by Ana Maria Hernando**, Museum Purchase
- **Climber, 2011 by Don Ed Hardy**, Museum Purchase
- **Trees, 2006 by Jeera Rattanangkoon**, Museum Purchase
- **At Sight Of Sun (Lark Bunting), 2022 by Kara Maria**, Museum Purchase
- **Jackson In Action, 1997 by Red Grooms**, Museum Purchase
- **Six school desks**, History Colorado
- **Larimer County books**, Erin McLaughlin
- **13 books for the Art Reference Library**, Connie Winters



RIALTO

T H E A T E R



RIALTO
T H E A T E R

RialtoTheaterCenter.org

The Rialto Theater Center opened as a silent movie theater in 1920 and is currently Loveland's premier performing arts venue, welcoming nationally touring musicians, comedians, and performers as well as local performing arts groups.



Joe Patti

Rialto Theater Manager

I only recently joined the Rialto as Theater Manager on November 7 so most of the activities of the year had already transpired. However, based on some off-hand comments people made, it was immediately apparent to me that a great deal of progress has occurred over recent years.

There was apparently a time when Cultural Services Director, Susan Ison, helped sell tickets and Public Art Manager Suzanne Janssen helped process deposits for the Rialto. I feel fortunate to be joining the Rialto at a time when the city has done so much work to increase staffing and acquire the equipment necessary to allow more opportunities for the community to participate in events as attendees and renters.

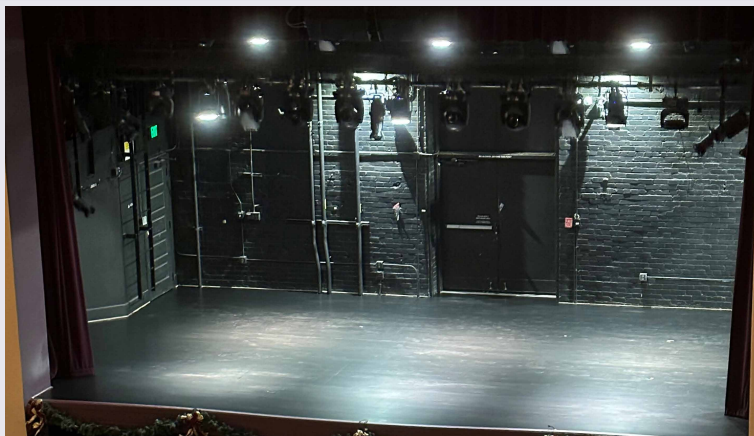
I am likewise grateful to find that the Rialto has an extremely dedicated volunteer corps that not only assists with performances as ushers, but comes in every week to sell tickets, take inventory, and organize concessions.

The pandemic forced many to make hard choices about interacting with large groups. We don't take our volunteers' commitment for granted. We are thankful so many choose to remain engaged with the Rialto and that people contact us each week asking how they can become involved.

Changes to the Rialto facilities came quickly during this year. Just in the months of November and December the concessions areas in the lobby and upstairs gained new counter and service spaces. Volunteers who worked events during the busy holiday season would be surprised to see how much had changed just over the course of a few days.

Between Christmas and New Year's Day, the blonde maple wood of the stage was stained black and some of the scuffed flooring in the seating area was sanded and resealed.

A benefit of these improvements is that we will be more able to serve an increasing segment of the community. Recently, a couple groups choose to use the Deveraux Room for their monthly meetings.



Stage Refinishing, Rialto Theater

Many of these improvements have been possible thanks to funding from the Shuttered Venue Operators Grant and Colorado Creative Industries programs which were intended to help organizations like the Rialto recover from COVID related challenges and develop the capacity to be more responsive and nimble.

With the completion of lobby renovations, artist Amelia Furman was able to put finishing touches on *The Story of Our Rialto*, her multi-media mural work which extends the entire first floor hallway of the Rialto annex from 4th Street to Backstage Alley, with a little side trip through the Rialto lobby. In the coming months, we will be working in partnership with the Art in Public Places program to select images from the murals pieces to use in our lobby and outdoor display cases to invite people to enter the hallway and explore the entirety of the project.





Roberta Cox

Rialto Theater Coordinator

2022 had been an amazing year at the Rialto Theater! I personally would like to touch on two accomplishments that are at the top of my list as being the most memorable: the Rialto's Centennial (plus Two!) celebration and construction/renovation projects!

Let's start with the Centennial Celebration which was four years in the making. The planning originally began with a request for carpet replacement. The old carpet was really tired, repaired and patched (with different carpet) over the years and really needed updating especially if we were going to have everyone over for the birthday bash! This was no small feat - we wanted it to be perfect! The designing of the pattern and color choices down to the smallest dots were very deliberate. This process took time but after many gatherings to final installation, the finished product was the perfect complement!

With the carpet project completed, we were on our way! Planning and execution of the event was going to take time and organization down to the tiniest detail. The date was set for May 23, 2020. We had big dreams but how do we do this logistically was the question. It started with a brainstorming session of what we each envisioned, what needs to happen, how to fund this event; ultimately it came down to how we wanted to share this historic event with the community. Our small but mighty staff had their assignments. Work began with vendors, weekly meetings and site visits. In March, we were getting close to the finish line - everything was coming together: the entertainment, equipment rental (stage, generators, video wall, sound, lights), food trucks, traffic control, barricades, trash & recycling, signage, volunteers, permitting, security, down to the port-a-let & hand washing station rentals. And just like that, the world shutdown!



Exterior of Rialto Theater, Centennial Celebration

Fast forward two years, we were able to reconvene, reorganize and successfully pull off this event with FACE Vocal Band opening and Marc Cohn headlining on May 21, 2022 despite snow in the forecast. It was decided two days before the event to scale back due to weather so a bit more scrambling was needed.

We are so thankful to our Centennial sponsors for their generous donations: Community Foundation of Northern Colorado, Bank of Colorado and the Sethre Family Fund as well as help from departments within and organizations outside the city of Loveland that helped make this event possible! We cannot thank you enough for making the Rialto look so good!

And, of course, we are thrilled to announce the completion of our new permanent bar and renovations in our concession stand and box office. The bar and concession stand re-opened in November to more functionality and much needed space. The new configuration of the concession stand along with a new popcorn machine has brought more practicality to this space as well. And the box office counter upgrade opened up the ticket office which now enjoys a bit more wiggle room!





Heather Rubald

Rialto Theater Event Coordinator

My job as Event Coordinator is wonderfully multifaceted. Newly created halfway through 2021, it encompasses scheduling and contracting of all rental events in the Rialto Theater, Devereaux/Hach Room, and the Walbye Conference Room, house management for all performances in the Theater, volunteer recruitment, training and scheduling, bar and concession stand inventory management, community event development, and, of course, other duties as assigned. With over a year now under my belt, I am feeling a nice balance between comfortable experience and challenging growth, making my workdays rewarding and fun.

The Event Temple software continues to be a great help in the management of our venue rentals. The whole team has become more adept at using it for their own purposes. This is especially helpful now that we have moved away from COVID cautiousness into full-blown rental mode. Devereaux/Hach and Walbye rentals more than doubled from 2021 to 2022, and the Theater added almost 100 events.

Recruitment of new volunteers saw an uptick as well, with 25+ new volunteers joining our roster in 2022. Some of them came on board especially to help during our giant Centennial Celebration event in May. The event was broken down into several shifts and areas and encompassed several locations (even with the move to inside). The volunteers all stepped up in their official bright orange t-shirts to cover the day beautifully, and many of them have joined us permanently.

In March, we reinstated group safety training for our volunteers and had a fun, informative evening of tours, training, and recognition. The event was a mix of new information, policy refreshers, and thanking volunteers for their service in 2021. A Volunteer Safety Manual was created and distributed to the attendees, and a digital version was

sent to all the volunteers. This manual is now one of the first bits of information given to new volunteer recruits. In the early fall, construction began in the box office, concession

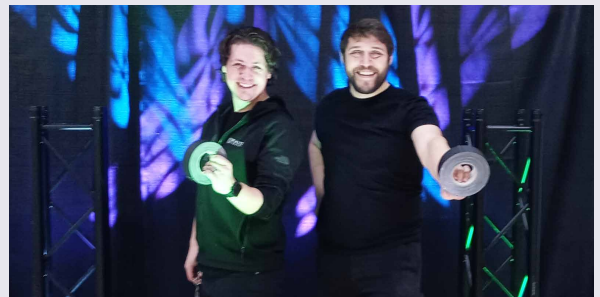


Volunteers at Concession Area in Rialto Theater

stand, and bar areas. The increased space and functionality have been a big plus for staff, volunteers, and patrons. Financed by the Shuttered Venue Grant, these upgrades took place in areas staffed mainly by volunteers.

These volunteers agilely tolerated the mess, knowledgeably critiqued functionality, cheerfully adopted new methods, and graciously adapted to their new spaces and equipment with enthusiasm and patience.

Some of our traditional community events and outreach programs fell victim to a very full performance schedule and temporary staff shortages. Still, we put together an exciting, high-tech booth for Children's Day in March, reinstated the Kid's Movie Club in the summer, and presented an "After the Lights" concert in the Devereaux/Hach room in conjunction with the Festival of Lights in November.



Phil Baugh and Dan Minzer, Children's Day





Phil Baugh

Rialto Theater Technical Coordinator, Audio

The Rialto Theater has been very busy this year! Our crowning achievement for 2022 was our Centennial Celebration in May. The main event was of course the



FACE Vocal Band, Centennial Celebration at the Rialto Theater

concert with local favorite FACE Vocal Band opening for national Grammy award winner Marc Cohn. The show was a massive undertaking to begin with, and weather forced us to move the entire concert from the 4th Street stage to inside the Rialto Theater. We coordinated with Spot On Sound Productions to push video and audio content from the theater to the massive LED video wall and sound system on 4th Street. The entire weekend was a rousing success!

A huge gain for the Rialto came in an expanded pool of Production Assistants. These experienced part-time technicians fill various roles from stage crew, audio, lighting, video, cinema, and anything else that arises in the

Theater Manager On-Stage, Centennial Celebration

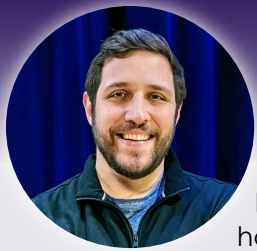
course of their duties. Our team of PAs are the backbone of many of our varied types of events, and they are an essential core to keeping our Summer Concert Series at Foote Lagoon running efficiently.

The Rialto also purchased a fleet of state-of-the-art digital radios for communication between our staff, crew, and volunteers on all shows and events. These radios have brought efficient and secure communication to the forefront of our events, enabling us to address any and all needs or concerns that may arise. Our patrons can rest assured that our communication infrastructure has their needs and safety in mind more than ever before.

Just before the end of the year, the stage floor of the Rialto Theater was refinished with a high-quality black stain. The new black appearance has many advantages for lighting our shows and hiding the cables and gear used in many of our concerts. Our stage looks very sleek, and we are excited about the updated look for our upcoming shows!

Lastly, as a Christmas present from Supply Chain Santa, we finally received a new, desperately needed, upgraded projector for the Deveraux Room. Immediately after installing the new Panasonic RZ120 the quality and brightness of the image instantly and dramatically improved. Due to the ambient light of the Deveraux Room's many windows and light fixtures, our old projector image was very dim and unable to compete with the ambient light, even with the shades drawn. The new RZ120 has substantially more light output than the old projector, and the RZ120 is a laser projector, meaning that (on top of its many other advantages) we'll never need to replace a lamp again!





Dan Minzer

Rialto Theater Technical Coordinator, Lighting

Events at the Rialto Theater Center have never looked better. In 2022, we made a few big upgrades to our venue lighting fixtures and systems. These changes give us more creative control of the productions featured in our Rialto Presents season. Additionally, we have greater flexibility to create fitting looks for the varied needs of our rental partners.

Our most exciting lighting acquisition this year was six ETC Lonestar ultra-bright LED moving light fixtures. These six fixtures have quickly become the MVP of the lighting rig, with capability to pan, tilt, adjust color, zoom, and apply patterns to their light beams. The versatility they bring is a necessity for our live events. Receiving them took 6 months due to supply chain issues, but they finally arrived in September and have been used in every production since.

Another big development for our lighting system is the addition of a Pathport Quattro 4-port Gateway for lighting network control. This gateway doubled the number of control parameters our lighting console outputs. This allows for many of the fixtures to be placed into more complex control modes and gives us some extra room in the network for future additions. Also, on the occasion that touring artists arrive with their own lighting console, guest control of the Rialto Theater fixtures is now as easy as connecting an ethernet cable.



Rialto Theater Stage Set-Up

Lastly, in late 2021 we purchased several IP65 outdoor-rated LED lighting fixtures. We were able to put them to the test in the 2022 Loveland Summer Concerts at the Foote Lagoon Amphitheater. Colorado summers are always prone to afternoon rainstorms and this year was no exception. These lights handled the weather well and produced some beautiful lighting looks during our summer concerts.

Our productions are looking great and continue to provide art and entertainment for our community. Whether it's a film, a comedian, a band, or an outdoor summer concert, there is always something exciting to see at the Rialto!



Rialto Theater Comedy Stage Set-Up

Rialto Theater
Attendance

30,398

Number of Events

206

Revenue
Generated

\$392,664

72

VOLUNTEERS

3,448

HOURS

Event/Rental Attendance

6,300

Number of Events

144

Revenue
Generated

\$21,339



RIALTO
T H E A T E R



Mikayla Adair

Senior Marketing Coordinator, Cultural Services

2022 was a year of growth for Cultural Services Department Marketing Team. The first of the year brought a bigger return of events and programs for the department. There was also some transition in our Graphic Designer role, and we welcomed Kristin Tuckerflores as our new Graphic Designer for the department in November 2022. We assisted with marketing over 20 art and history exhibits, a full line-up of art classes for kids and adults, the launch of the new Otocast public art tour app that explores TAAP 3D installations along 4th Street, and a full line-up of Rialto Presented shows, summer movies and more.

Division Highlights:

- The Rialto highlight of the year was the 102-year celebration with performances by local favorite, FACE vocal band and Grammy-award winner Marc Cohn. We had to pivot the day before for the change of weather so last-minute marketing was successful in getting communication out about the event.
- The artwork featuring musician and artist John Mellencamp came to the Museum in November 2022. We had extra marketing dollars to work with, so we created an expanded advertising plan that included regional billboards, buses, radio, digital buys, and social media to encourage visitation to the exhibit.
- Public Relations was an area of emphasis for 2022. We secured 55 placements in local and regional publications covering exhibits, events, and installations for the Cultural Services department.



Penelope by Tammy Bennett



Fervent Reclamation by Jen Starling



Of Land and Water by Marie-Luise Vaughn

ONLINE PRESENCE SNAPSHOT

WEBSITE TRAFFIC

	Rialto Theater	Loveland Museum	Public Art
Pageviews:	124,877	105,305	5,483
New Visitors	87%	87%	85%
Returning Visitors	13%	14%	15%
Web traffic coming from Social Media Platforms	32%	32%	39%
Top Pages:	Homepage, Rialto Presents, Loveland Summer Concerts	Homepage, Classes & Workshops, Art Exhibits	Homepage, Calls for Entry, E-Newsletter Sign-Up

SOCIAL MEDIA



E-News

	Rialto Theater	Loveland Museum	Public Art
Email Subscribers	7,055	722	716
Avg. Open Rate	64%	64%	61%
Avg. Click Rate	9%	8%	8%

Exterior of Rialto Theater at Christmastime



Boards and Staff

Cultural Services Department

CULTURAL SERVICES BOARD

Dr. Dierdre Cook, Chair
Karen Cobb
John Fogle, City Council Liaison
Teri Johnson, Vice-Chair
Kris Ortmann
Susan Sharp
Amy Stevens
Cornelia Winters

VISUAL ARTS COMMISSION

Jade Windell, Chair
Susan Atwater
Angela Brill
Bruce Gueswel
Greg Hoff
Jacki Marsh, Mayor, City Council Liaison
Maryjo Morgan
Abbie Powers
Margaret Rosborough
Curtis Rowland
Pat Kipper, Alternate

BACKSTAGE RIALTO

Jim Doherty, Chair
Karen Cobb, Co-Chair
Valerie Nicholson
Jean Mullett Hosey
Lynne Niemeyer, Secretary
Susan Ruff, Treasurer
Dan Engelhardt
Leah Johnson

CULTURAL SERVICES STAFF

Mikayla Adair, Senior Marketing Coordinator
Phil Baugh, Technical Coordinator, Audio
Maureen Corey, Curator of Art
Jennifer Cousino, Curator of History
Roberta Cox, Theater Coordinator
Jenni Dobson, Curator of Education
Eric Franklin, Exhibits Preparator
Tegan Hollen, Business Services Technician
Angela Canada Hopkins, Business Services Specialist
Susan Ison, Director of Cultural Services
Jessica Johnson, Business Services Specialist
Suzanne Janssen, Public Art Manager
Dan Minzer, Technical Coordinator, Lighting
Joe Patti, Rialto Theater Manager
Heather Rubald, Assistant Theater Coordinator
Sophia Thiros, Clerk Cashier
Kristin Tuckerflores, Graphic Designer
Kristi Woolsey, Executive Assistant
Ashley Yager, Collections Manager

Tame your Marmots by Tammy Brazee



Members

Museum

Patron

Bunde, Becky and Con
Cook, Dierdre and Don
Garnand, Nanci
James, Carol and Scott
Kipper, Patrick and Nancy
Sethre, Earl and Lisbeth

Contributor

Colgate, Jana and Bruce
Drage, Robert and Susan
Dunnington, Ken and Mary
Franke, George
and Barbara
Gaylord, Harvey
and Suzanne
Hammond, Lynn
and Norma
Hvizda Ward, Lori and Ken
Love, Harry and Jody
Raymond, Dorothy
and Peter
Reynolds, Chuck and Sandy
Sloan, Cathy
Valdivia, Sal
and Laurie Wells
Winters, Connie
and Donald

Supporter

Aaron, Patricia
and Arthur M.
Adams, Steve and
Gretchen
Bentrott, Craig and Karen
Boyum, Carolyn
Cada, Dot and Frank
Campbell, Gloria
and John Verwys
Childers, Dan and Patty
Copeland, Sheri and Bill
Disney, David
Dodge, Robin
Dunham, Jennifer
and Michael
Fernley, Rochelle
Freeman, John
and Judy
Gray, Steven
Hoff, Greg and Miriam
Hunt, Pat and Bill
Hurley, Pamela

Ingram, Peggy
Ison, Susan
Johns, David and Debra
Kathka, Timothy
Kenyon, John
Kiessling, Jennie
Kincanon, Lynn
Lehman, Erika
Linden, Susan
Moskowitz, Daria and Larry
Nicholson, Sandra
Nowack, Gerhard
and Caroline
Nun, Sherri
Oelke, Kimm and Lance
Ortmann, Kris
Osmundson, Linda
Pagaduan Ignacio,
and Cynthia
Patterson, Jon and Rachel
Peterson, Carl and Dianne
Pitts, Sarah
Pomranka, Howard
Reaud, Alfred P.
Riblett, Charles
and Carolyn Taylor
Ross, Elizabeth and Claude
Rutledge, Doug and Sheila
Ryan, Emilie
and Clayton Fraser
Schell, Stephen
and Susan
Schulte, Don
Scudamore, Jim
and Judy
Selbst, Debbie and Howard
Shea, Jill and Kevin
Sokoloski, Cheryl
and Leonard
Taylor, Melissa
Tucker, Colleen
Tully, Mary and Wanda Rice
White, Susan
Winder, Kathleen
Zimmerman, Carle

Abracadabra by Craig Campbell



Members

Museum

Family

Atwater, Susan and Vince Deely
Chavez, M. Judy and Maria Spoon
Cooper, Jim and Rhonda
Davis, Alfred and Marilyn
Devries, Karen and Scott
Godwin, Robert and Alan
Gomez, Carla and Antonio
Hack, Lydia
Hansen, Rodney and Diane
Helms, Nancy and Robert Dean
Howard, Ryan
Huddleston, John and Anne
Johnson, Leah and Mike Dickson
Johnson, Scott and Susan
Lapierre, Diane and J.R.
Mioduski, Jr., Ted and Eileen Mioduski
Owens, Terrence and Stacey
Renick, Kathryn
Rogers, Jordan and Hannah
Stephens, Jon and Susanne
Thielen, Ken and Lee
Turner, Sara
Valdivia, Sal and Laurie Wells
Velasco, Marcela and Camilo Jimenez
Weibel-Duke, Leslie and Ty Duke
Wible, Kevin
Wilkes, Samantha

Dual

Atchison, Jill
Babcock, Marina and Paul
Bath, Vicki
Bock, Regina
Boulle, Kathy
Bredeson, Michelle and Catriona
Jackson
Brown, Danielle
Brown, Jud and Donna
Callender, Joy and Charlie Kohlhardt
Carolan, Emmett and Kim
Cox, Jim and Lisa Hoffman
Davis, Helen B.
Davis, Jean and Jeff
Dietrich, Chris and Dee Colombini
Donaldson, Dave and Susan
Dotson, Jan and Sam Freund
Duchateau, Paul
Evans, Julie and Steve
Fant, John and Pam Marth
Feagin, Jerre and Amy
Gallagher, Jim and Susan Gardner
Gallegos, Mary
Gillingham, Tommy
Gould, Monica and Scott
Grant, Ann M.
Grenz, Angeline and Joshua
Guber, Jeremy and Sarah
Gueswel, Bruce and Cyndi
Guilboard, Cindy
Guilboard, Cindy and Doug
Guild, Kimberly
Gutierrez, Cecil and Kay
Hale, Janet
Hanson, Patricia
Harris, Chris and John
Harshberger, Bruce and Janet
Haynes, Deborah and David Thorndike
Heddens, Virginia and Elizabeth Smith
Hento, Angela
Herbert, Carol
Holmes, Mary Ellen
Hung, Yi Ling
Hyde, Sandee
Jackson, Mike and Darla
Jarolimek, James
Jecminek, Susan
Jernigan, Charles and Peggy
Johns, Carla and Todd
Johnson, Dayton and Joyce

Kane, Brian and Ann Fleischmann
Kindschy, Jon and Peggy
LaBarre, Sarah
Lambert, Kathie
Little, John and Katy
Lowe, Ginny
May, Lisa
McFall, Edward
McGovern, Stephanie and Jay
Neighbors
McKnight, Robert and Zella
Mergelman, Audrie and Ed Darchuk
Michieli, Gene and Betsy Winston
Milewski, David and Kristine
Mills, Dave and Diane
Milner, Jennie
Moninger, Bill and Sally
Monroe, Lea
Murphy, Jacquie
Murphy, Marilyn and Robert Medlock
Myers, Michelle
Nelson, Cindy and Nick
Newbrey, Robin
O'Grady, Susan and Jim
Parker, Rick and Mary Nusser
Parrish, Scott
Ray, Julie and Ken
Richards-Palmquist, Mike and Jessica
Rogers, James and Deanna
Rogers, Marlene
Ross, R.
Sampson, Timmy
Schindler, R. Lee and Susanne Durkin
Simms, Michael and Melanie
Sonnenberg, Jordan and Cassie
Sontag, Karl Eric
Steiner, Gary and Luanne
Stephens, Kristin
Sucheck, Mary
Suter-Gibson, Michael and Linda
Thiros, Melissa
Thoman, Judy and Doug
Wagner, Richard and Kathy
Williams, Jeff
Womble, Sandy
Woodbury, Ellen and Brian Wendt
Woolsey, Kristi
Yarbrough, Kenna
Young, Roger and Niki Brady
Ziebart, Katherine

Individual

Allen, Kent
Baumgart, Jane
Baumgartner, Alison
Bennett, Sarah
Bernagozzi, Debora
Bocek, Pat
Boston, Stephen
Botero, Ana Maria
Bowlin, Tammy
Cobb, Karen
Colson, Billie
Cramer, Jana
Daley, Melissa
Darsey, Becky
Dyer, Chris
Engel, Jacquelyn
Espach, Becky
Gray, Reggie
Hall, Robert
Harris, Kenneth
Hawkins, Jessica
Hejde, Kate
Hester, Holly
Horn, Lori
Huckaby, Amy
Hunt, Alison
Johns, Chad
Johnson, Jessica
Johnson, Stacey
Kehoe, Christine

Kessler, Ann
Leszczynski, Kim
Maestas, Andrea
Meracz, Thomas A.
Miller, David
Milway, Edward Gene
Myers, Heather
Norton, Brien
Orman, Susan
Patino, Danieli
Pearson, Mary
Porter, Brent
Rohnke, Kevin D.
Sellers, Ann
Shaddock-Mcnally, Jody
Smith, Elizabeth
Swanson, Susan
Tippett, Delores
Travis, Louanne
VanGieson, Laura
Vannorsdel, Janna
Vialpando, Amy E.
Weakland, Emily
Wenger, Charlice
Wollan, Annet

Senior Dual

Andre, Patti
Asmussen, John
Avery, Ann and Jim Isenhardt
Bachus, Julie
Balderson, Frank and Elizabeth
Bator, Thom and Tannis
Baumgart, Charles
Beard, Deb
Beedle, Phil and Lynn
Benedict, Raymond and Donna
Boeding, Kathy and Marv
Boian, Michael R. and Ann C.
Bretting, Denise and Mark
Briggs, Annie
Bryson, Richard and DeAnn
Burger, Steve and Pat
Clarke Ort, Susan
Cleveland, Ellen
Clough, Jerry and Judy
Cofrin, Laura
Conrey, Mike and Beth
Conte, Linda J.
Cook, Philip and Carole
Cotter, Barbara
Daigle, James and Mindy
Danbom, David B. and Karen R.
Dennis, Dorothy
Dildine, Chris and John
Dornseif, Steve and Karen
Eastman, Mike and Elaine
Ellsworth, Judith
Ellsworth, Peter
Elvheim, Cam
Farley, Phil and Janice
Frey, Celia and Ed
Fultz, Kathy and Dennis Veilleux
Garber, Judy
Garcia, Gil and Susan
Gomez-Smith, Kari and Bill Smith
Gunderson, Joan
Guthrie, Alice
Hansford, Nancy and Bruce
Hanson, Charles A. and Sheryl
Harms, Ron and Sally
Hartshorn, Sally J. and Ed Ogle
Haskett, Karen
Haupt, Charles and Sethia
Head, David and Beverly
Herrmann, Robert and Ann
Hobman, Gisela
Holmes, Wendy
Horner, Pat and James
Hutchinson, James and Linda
Irelan, Faye and Wayne
Johnsen, Bernie and Ann

Jones, Terri and Patrick Henry
Jordan, Colby and Sharon
Kanowitz, Chris and Martin
Kelton, Ronald and Susan
Kravits, Philip and Karen
Lamb, Dennis and Patricia Skrentny-Lamb
Lehman, Robert and Virginia
Long, Janae and Mark Greenwald
Lovelace, Clayton and Mary
Lucy, Bob and Susan Honstein
Lutes, Frank and Ruth
Lynn, Cheryl
Marvuglio, Mary Jane
McCargar, Vicki
McCreary, Margaret and Milan
Karspeck
McCulloch, David E. and Thelma Riggs
McDonald, Annie
McGarry, Leo and Sandra
McGrath, John and Marlys
McIntosh, Tom and Jan
Mueller, Harry and Susan Brand
Nielsen, Kathy and Albert Viehman
Niemeyer, Lynne
Ninneman, Connie
Noffsinger, Jeffrey M.
Nordwall, Meg
Oberg, Mary and J. Michael
O'Donnell, Dan and Joyce
O'Farrell, Nancy and David
Opiela, C.C. and Wil Hodges
Oswald, Donna
Pannaman, Arlene and Allyn
Patterson, Evan and Veronica
Perry, Mike and Sharon
Perry, Sandy and Joe
Phillips, Jerry
Pitcher, Merritt and Judy
Platt, Constance and Frederic
Platz, Charles and Cheryl
Pomering, Sherry and Pattie Cowell
Popa, Jim and Merry
Porsche, Margaret
Porter, Carol
Porter, Cindy and Matthew
Pound, Grant and Peggy Lawless
Prouty, Jon and Mary
Robinson, Lynn
Robson, Melissa
Rosborough, Margie and Riccardo
Dreith
Sager, Truman and Margaret
Salazar, Roxane
Samson, Sharon and Jeff
Schilling, Richard and Marlene
Scott, Roger
Scott, Ward and Barbara
Sebern, Pat and Red Snyder
Serns, Peggy and Charles
Severn, Craig and Anne
Simmons, Carol and David Steingraeher
Skold, Melvin and Faith
Smith, Romey and Marolyn Lemming
Slof, William
Spivack, Sally
Staff, Adrienne
Stahlin, Rick and Bonnie
Stork, Kathi and Steve
Swanty, Ruth and Jeff
Swett, Sharon and Patricia Laber
Tharp, Ken and Marty
Thygesen, Amy
Timpson, Bill and Gailmarie Kimmel
Tracy, Robert
Tucker, Marianne
Van Dell, Don and Vicki
Voigt, Marge
Wallace, Jacqui
Wehling, Kathy and Curt Cichowski
Westdahl, Gordon and Lola
Wiedmann, Dr. Arietta and Anndevo

Members Museum

Ryan
Wilbur, Reuben and Shirley
Wilcox, David
Williams, Diane
Winer, Stephen and Pamela
Woody, Robert and A-Young
Zink, Charlotte

Senior Individual

Adams, Linda
Ague, Ann M.
Alfino, Karen
Allen, Neil
Amsler, Nancy
Anderson, Dick
Anderson, Linda
Anhorn, Sharon
Applegate, Marcia
Arbo, Ann Marie
Arminio, Tina and Wayne Snodderly
Arrand, Melinda
Aubin, Susan
Ault, Vonna
Babcock, Jane
Baker, Nancy
Balis, Helen
Ball, LuAnn
Barry, Rick
Barton, Marty
Baumann, Eleen
Becker, Bill
Becker, Ron and Carole
Beckley, Phyllis
Beckmann, Christi
Beede, Mark
Beller, Sher
Bennett, Connie
Benson, Carolyn and John Grchan
Bercaw, Louise
Bierstein, Karin
Bingham, Eve
Blake, C.
Blaszczuk, Brenda
Bohren, Lenora
Bolesta, Pam
Bonsall, Susan
Booz, David P.
Bottini, Brenda
Brown, Edie
Brown, Laura
Brown, Maggie
Buhr, Jenelle R.
Burke, Joanne
Burnitt, Elaine
Caldwell, Mary Ellen
Carlisle, Cynthia
Carlisle, Sharon J.
Carter, Donna
Carter-Pierce, Cheryl
Case, Barbara
Chacon, Anita
Chase, Miriam
Christmas, Terie
Church, Kim
Clark, Roger and BJ
Cochran, Curtis
Cole, Sandra
Coleman, Bonnie
Condit, Carol Kay
Conrad, Martha
Cronin, Karen
Cunning, Gail
Cummings, Pamela and Clark
Dallemand, Barbara
Danahauer, Sharon
Darling, Pam
Darracott, Mary
Darst, Jeane
Daugherty, John
Daugherty, Nancy

DeGood, Kae
Della Ripa, Sandra
Demianew, Robert
Denovellis, John
DesJardin, Jan
Devine, Lia
Dickmann, Ellie
Diver, Katy
Docampo, Isabel and Scott Somers
Dodge, Deborah and Mike
Drew, Mary Jo
Driver, Susan
Dubois, Lisa
Eads, Renate
Ebell, Vicki
Ebrey, Judith
Edwards, Diane
Eichmann, Sylvia
Ellis, Roxanne
Farestad, Karen
Farr, Anne
Feinerman, Frances
Fine, Cathy
Finley, James
Fiore, Anne
Fischer, Anne
Fish, Robin and Carol
Fortin, Ken and Carol
Fox, Linda
Franklin, Elizabeth
French, Linda
Fryer, Karen and Cameron Begg
Fulner, Gerald and Karen
Gallagher, Peggy
Garcia, Ann
Garcia, Fred and Nancy
Gay, Steve
George, Marilyn
Gerde, Glenda
Getz, Camille
Gilroy, Judith
Girardeau, Lynn
Gordon, Hazel
Gorun, Alex
Grassens, Leo
Green, Marcia
Grill, William
Gullikson, Mary
Gunter, Lisa
Gutowski, Joeann
Hadden, Beverly
Haesemeyer, Elizabeth
Hagedorn, Susan
Hagge, Curt and Carmen
Haines, Nancy
Hall, Sara
Halverson, Dolly
Hammond, Sandra
Haner, Sharon
Hard, Suzy
Harding, Darrell and Jo Ann Hovanec
Harris, Susan
Hartman, Kathy
Hautamaki, Bonnie
Hawk, Jane
Heaton, Nora
Heller, Marilyn
Helmets, Martha
Hennen, Jayne
Henry, Mary
Hilvitz, Stephanie
Hines, Shelley
Hodges, Sandy
Hofer, Rebecca
Hoffmann, Lynda
Hogg, Loretta
Hogsett, Karen
Hull, Pam
Huth, Stephen and Patricia
Jakobsson, Nancy

Jansen, Deborah
Javernick, Ellen
Jessen, Ken
Jeune, Donald
Johannsen, Darlene
Johnson, Bonnie and Kevin McManus
Johnson, Bruce
Johnson, Jacqueline
Johnson, Mary Claire
Jones, Susan
Jones, Sylvia and William
Jordan, Joan
Julian, William and Dorothy
Kajencki, AnnMarie
Kearns, Jeanne M.
Keil, Ann
Kelsic, Beth
Kenney, Sue
Kichen, Sandra
Klug, Ellen
Knight, Gwen
Knight, Jeanne
Kokkin, Kirsten
Kopper, Beverly
Kreiner, Karen
Lack, Phillippa
Ladd, Mary
Lambert, Barbara
LeBlanc, Linda
Lechleither, Beth
Lederer, Dr. Peter and Jane
Lees, Kathryn
Ligon, Lee and Mary
Lines, Marilyn
Lingenfelter, Carol
Lipp, Ronnie and Dan
Lollar, Robert
Lorenz, David
Lucke, Liz
Magouirk, Judy
Main, Robin
Manci, Karen
Mankus, Sally
Marander, Carol
Marie, Ann
Marie, Sherri
Mathis, Katherine
Mayger, Bonnie
McCam, Connie
McDonough, Marita
McGee, Pam
McGill, Carol A.
McKnight, Judy
McMaster, David
McNamara, Linda
McTee, Sherry
Mehrer, Renee
Merlo, Kathy
Meuret, Diane and H.
Middleton, Sue
Mihaljevic, Lynda
Miller, Linda
Mollohan, Judy
Moody, Susan
Morgan, Maryjo
Morger, Janet
Morris, Giles
Murphy, Catherine
Neisen, Sharon
Nelson, Sharon
Nesmith, Sherry
Nevrivy, Jane
Noffsinger, Linda
O'Brien Gonzales, Annie
Olson, Jim and Kathleen
Parker, Els
Pearce, Mike and Carolyn
Peeler, Kayo
Percival, Dave and Geri
Perry, Shannon

Pomranka, Carl
Pruett, Sondra
Rabe, Carol Sue and Richard
Greenwall
Racicot, Rhonda
Rathbun, Turid
Reynolds, Juanita
Rice, Jane K.
Rike, Carole
Riley, Debe
Robertson, Sharon
Robinson, Beth
Roos, Sheri
Rowe, Sharon
Rowland, Tom
Rush, Richard and Carol
Russell, Vicky
Saelens, Kay
Schaefer, Kimberly
Schaffner, Marie
Schiller, Rick
Schmich, Jacqua and Gerry
Scott, Ruth
Sebern, Steve
Severance, Janet
Skeffington, Julie
Smith, Darlene
Smith, Lillian
Sorrell, Doug
Spotts, Karen
Spring, Sarah
Spurlin, Guiditta
Stangel, Neil and Linda
Steele, Susan
Stehman, Martha
Stein, Robin
Steinruck, Jeanne B.
Stone, Ronda
Stranberg, Jim and Sharon
Strayer, Connie
Stuart, Aletha
Stumpf, Ken and Joyce Devine-Stumpf
Summers, Christi
Swain, Eliza
Thayer, Susan
Thoms, Brian and Jeanne
Thornburg, Brenda and Scott
Tillotson, Robert
Todd, Stella
Toomey, Midge
Topolnicki, Sue
Turner, Celia
Van Gorder, Debbie
Vanderweit, Eve
Vienneau, Larry
Wahlen, Marvin
Waldner, Lucille
Walker, Leslie
Wall, Jo Anne
Warner, Jo Anne
Warren, Karen
Washecka, Gail and K.
Wasmuth, Phyllis
Waters, Mary
Watson, Kathy
Waukau, Ruth
Weber, Betty and Philip
Wehner, Elizabeth
White, Ina
Whiting, Kate
Williams, Debbie
Worrall, Nell
Wright, Judith
Wright, Kathi
Zastrow, Georgia
Zdenek, Vonne
Zimmerman, Herb
Zuniga, Janet
Zwart, Philip



LOVELAND ARTS AND CULTURE
CULTURAL SERVICES DEPARTMENT